



SAFETY AND  
EFFICIENCY IS OUR  
CRAFT

**RIGTOOLS**

NOVEMBER 2022



## About RIGTOOLS

RIGTOOLS is a pioneering company founded 2010 in Denmark. Key personnel from leading offshore drilling companies joined forces setting a team of highly specialized drilling experts. Based on decades of hands-on experience, know-how and ingenuity RIGTOOLS have developed a product line of unique and innovative tools and equipment appealing to both offshore and onshore drilling operations. From our headquarter in Denmark as well as our subsidiary in Texas we supply drilling operations on six continents and seven seas with safe and efficient tools.

## Mission

We increase safety and efficiency on drilling rigs by eliminating downtime and safety hazards.

## Vision

The first-choice vendor for drilling operations seeking safe and efficient rig tools.



# BHA WASH TOOL

The high level of safety in today's drilling operations around the world require special attention to equipment. Most drilling rigs have fully automated derrick and pipe handling systems. In certain regions the legislation prohibits personnel to work on the drill floor while the automatic pipe handling machines are in use. But still we experience personnel using HP cleaners when BHA is pulled through rotary.

## Facts

The tool is tailor-made to fit on top of the diverter or bell nipple. It connects to the rig's HP system or a special HP unit fit for purpose. Actuation of HP water can be done locally on the drill floor or remotely from driller's cabin. BHA Wash Tool is welded in heavy stainless steel and in compliance with "Dropped Object Prevention Handbook". CE certification. Welding certificate.

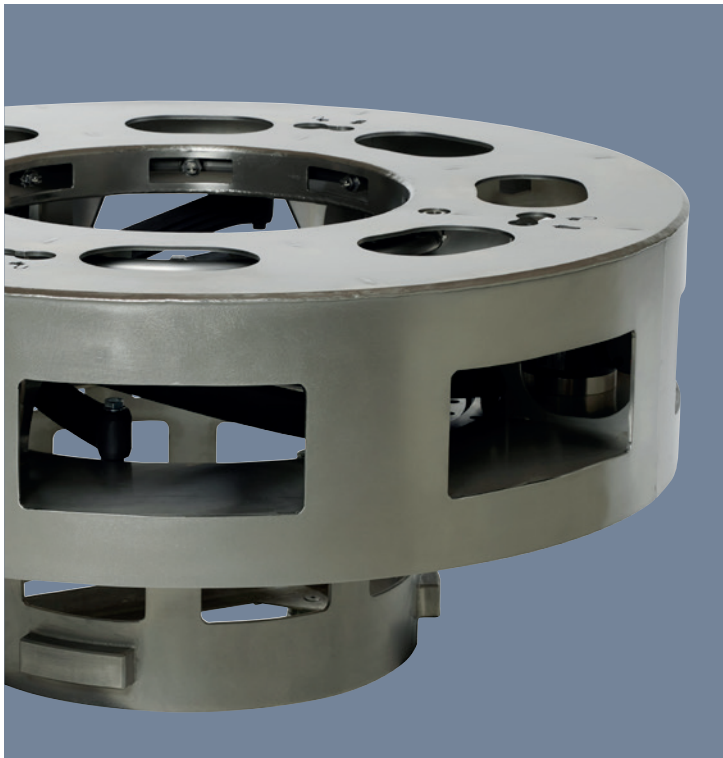
## Advantages

Easy to install on top of diverter or bell nipple. Improves safety on drill floor. No risk of dropped objects. No debris on drill floor or windows from using manual HP cleaning. All debris will be kept below rotary. Clean and tidy. BHA will be pulled faster out of hole, no stops for manual HP cleaning. Clean BHA when racking back or laying down on deck.

## Benefits

BHA Wash Tool eliminates personnel using manual HP cleaners in the Red Zone when BHA etc. is pulled through rotary. No exposure to the danger of dropped objects or working close to remote operated machines on drill floor. The tool only uses very limited water volume when HP cleaning the BHA. Less time spent on housekeeping after tripping, fast moving to next operation, less flat spots on operational trends.





# TYPHOON WIPER v.3

Red Zone compliance

Automated pipe handling systems have allowed many conventional rig floor tasks to become obsolete. Yet a fundamental operation – wiping the pipe when POOH, still relies on technology from the days of wooden derricks. With 100% Red Zone compliance a non-negotiable in today's Drilling industry, there existed a gap in technology that RIGTOOLS identified and have solved with the TYPHOON v.3.

## Facts

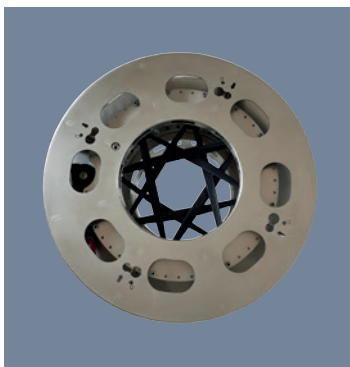
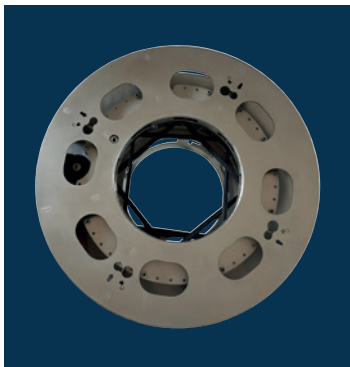
The TYPHOON v.3 is tailor-made to fit on top of the diverter or bell nipple. It connects to the rig's HP water system or a special HP unit fit for purpose. In addition LP air is connected for actuation of the rubber wiping blades. Actuation of water/wiper blades can be done locally on the drill floor or remotely from Driller's Cabin.

## Advantages

- Simplify Red Zone Management.
- Hands free operation.
- No debris on drill floor or windows from using manual HP cleaning. All debris will be kept below rotary.
- Clean and tidy.
- BHA and DP string will be pulled faster out of hole, no stops for manual cleaning.
- Clean BHA when racking back or laying down on deck.

## Benefits

- TYPHOON v.3 eliminates personnel performing manual cleaning in Red Zone when BHA and DP is pulled through rotary.
- Cost savings on purchase of wiper rubbers.
- Rig time savings on installation/removal of wiper rubbers on every trip.
- Rig time savings when pulling BHA through RT.
- No mud on slips.
- Eliminates handling of master bushings prior to POOH if installing wiper rubber below the table.
- Eliminates hazards of mud on rotary table if wiper rubber installed above table.
- Blades adjustable through full range from 18 3/4" to 2 7/8" – Ability to wipe casing, stand-alone screens, completion jewellery.
- No exposure to the danger of dropped objects or working close to remote operated machines on drill floor – 100% Red Zone compliance.
- The tool only uses very limited water volume when HP cleaning the BHA.



# RIGTOOLS CLAMP

When handling lifting subs homemade tools or straps are often used. Handling lifting subs in various ways have caused many incidents and pinched fingers.

## Facts

Made of stainless steel. We supply RIGTOOLS Clamps in following standard sizes:

- 3 1/2"
- 4"
- 5"
- 5 1/2"
- 5 7/8"
- 6 5/8"
- 7"
- Two-legged lifting sling and full certification for offshore use is included.

## Advantages

RIGTOOLS Clamp is clamped directly around the lift subs when installing or removing them from BHA components. The safety hooks keep the RIGTOOLS Clamp securely locked while in operation. No loose bolts or shackles required, no need of slings for handling lift subs.

## Benefits

RIGTOOLS Clamps makes operation more safe and efficient when handling lift subs in vertical and especially horizontal position. The handling is in control and keeps hands and fingers free from danger. The risk of hanging up in threads when removing lift subs in vertical position is reduced.





## ELEVATOR HANDLING TOOL

When auto or manual elevator is hanging on the bails, then simply pick up the Elevator Handling Tool with a winch and close the elevator around the Elevator Handling Tool. Now the elevator can safely be lifted out of the bails.

### Facts

- Made of stainless steel.
- Delivered with full lifting certification.
- Weight only 11 kg.

### Advantages

Slings are no longer required.

### Benefits

- Elevator Handling Tool improves safety and efficiency when handling any size manual or auto elevators.
- No risk of dropping the elevator.



## FOSV HANDLING TOOL

The handling tool is installed in the Fully Open Safety Valve/Kelly Valve in advance.

### Facts

If a kick is detected while tripping, the FOSV with preinstalled FOSV Handling Tool can instantly be lifted by tugger and installed. Delivered with full certification and SWL. We can deliver for all safety valve thread types.

### Advantages

No manual chain tongs are required. When using FOSV Handling Tool, safety valves can easily be stabbed and screwed in.

### Benefits

The design contributes to fastest possible action and thereby reduces the risk of delays. The circular handle creates sufficient torque enabling one man to tighten the FOSV by hand.

# COBRA WASH & DOPE TOOL

Most drilling rigs have fully automated derrick and pipe handling systems. In certain regions the legislation prohibits personnel to work on the drill floor while the automatic pipe handling machines are in use. But still we experience personnel using HP cleaners and manual dope brushes when drill pipe and other tubulars are cleaned and doped prior to connection.

## Facts

The COBRA can be installed two different ways. Stand-alone or integrated with the pipe handling system. It can be tailor-made to fit most drill floor applications and to be used with most types of pipe handling equipment.

As stand-alone the COBRA is placed conveniently on the drill floor. When the DP moves from setback area towards well center the pipe handler makes a wash and dope stop. The COBRA will raise vertically and position itself embracing the DP pin end. While engaging with DP a 360-degree sequence is simultaneously HP washing the threads. While the COBRA descends back down 360-degree dope is applied. After a few seconds the DP can move on.

When integrated the COBRA is installed on the pipe handler/racker. The COBRA will raise to engage with the pin end and to carry out the wash and dope sequence.

Wash time and applied dope volume are PLC controlled parameters. The COBRA require power, HP water, air and dope to operate. It is ATEX certified, Zone 1, CE certification, etc. Optional choices are:

- Dope pump stand-alone. Data tracker and heat tracing available.
- HP Wash Down Unit, integration available.
- Supply station. Dope pump and HP Cleaner build into cabinet.

## Advantages

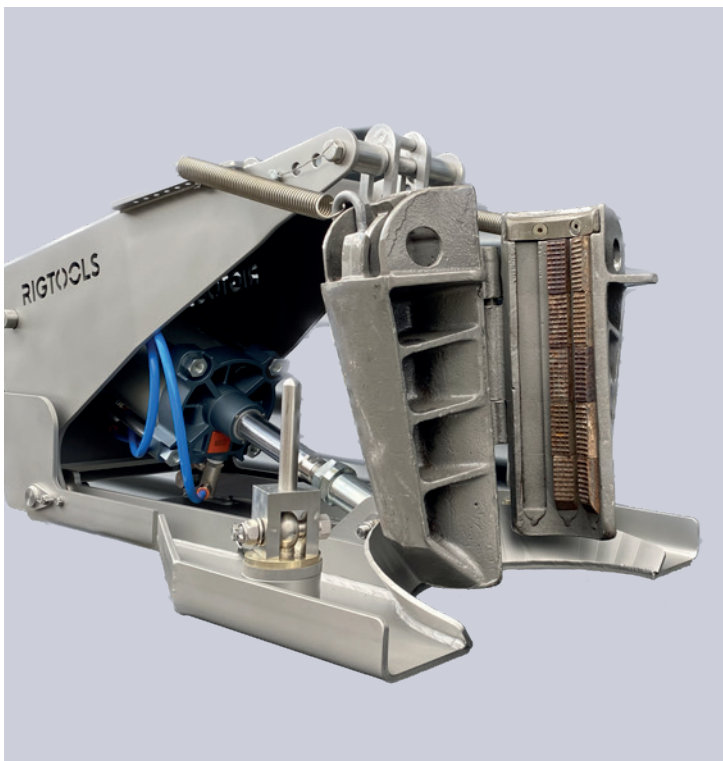
Easy to install on the drill floor or pipe handler. Air-driven cylinder ensures gentle tool interaction with DP. Self-cleaning interior wash/flush sequence. Drain hose connection, no spill on drill floor. No personnel in drop zone while tripping in hole. The COBRA will wash and dope the DP tool joints automatically and ensure clean threads before applying correct amount of dope.

## Benefits

Releases human resources. Personnel avoid the danger of dropped objects or working close to remote operated machines on drill floor (Red Zone). No over torqued connections. Not taking up iron roughneck time (as when pipe doper is installed on iron roughneck).







## BACKSAVER SLIPS LIFTER

The BACKSAVER Slips Lifter is a power slips lifter which eliminates the need of manual handling of heavy slips. It can be operated from the Driller's console or at a safe distance.

### Facts

The BACKSAVER Slips Lifter can be hydraulic or pneumatic operated as per customer requirements.

### Advantages

- Easy and quick to install.
- Optimized, robust design developed through years of field experience.
- No need to remove rotary insert bowls or master bushing like other type of automatic slips or slips lifter.
- Simplified adjustment for slip length.

### Benefits

- Personnel are kept out of Red Zone.
- Personnel will not have to lift heavy slips which is safer and more efficient.
- The number of personnel required on the rig floor is reduced.
- Reduced Total Cost of Ownership from simplified spare parts package.
- Easy to maintain and repair.



## HI-HAT DOPER

HI-HAT Doper is a lightweight raised frame for buckets. The integrated lid keeps water and debris out of the expensive dope.

### Facts

Frame and lid made of galvanized steel.  
1 meter high and weighing 10 kg.  
Two brackets on the sides for holding dope brushes.

### Advantages

The pedestal with brush brackets and foot operated lid improves ergonomics.  
Fast and efficient to use.  
Furthermore the lid will keep the dope clean.

### Benefits

Personnel will not get exposed to dope. Keeping the dope clean will extend the lifetime and reduce the amount of half full buckets discarded due to contaminated dope. No contaminated dope will be applied on threads.

# SPEEDY CLEANERS

All Speedy cleaning tools are designed to ease daily HP cleaning operations on the drill floor. Depending on preference the tools can be used with HP water or air.

## Facts

- 5 different specialized cleaning tools available, together with quick change out gun.
- Made from high quality stainless steel.
- Ensures HP cleaning operations for various tubular handling tasks are performed in the most efficient manner.
- Option to supply all tools within dedicated storage – “speedy cabinet” to ensure they are always to hand and neatly stored.

## Advantages

The operator using Speedy Cleaners spends only a few seconds to clean pin or box threads 360-degrees, Iron Roughneck dies or various wireline tools in one workflow.

## Benefits

Increase efficiency and reduces exposure of personnel in Red Zone. The operator works at a safe distance with the tool intended for the specific operation.

- Speedy Pin Cleaner (Also available with 90 degree and 45-degree bends)
  - Used for drill pipe pins up to 6 5/8” FH.
- Speedy Pin Cleaner XL (Also available with 90 degree and 45-degree bends)
  - Bigger ID for cleaning casing up to 10 3/4”. Has also been used with success when cleaning wireline tools when coming out of the hole.
- Speedy Die Cleaner
  - 3-way nozzles spaced at 120-degrees for efficient cleaning of Iron Roughneck dies.
- Speedy Box Cleaner
  - Rotating head on lance for cleaning Casing and Drill Pipe boxes.
- Speedy Cleaner
  - Single nozzle for general cleaning activities.
- Speedy Gun
  - Quick release gun for quick change out of different Speedy Cleaners.
- Speedy Cabinet
  - Contains the full set of Speedy cleaners.
  - All tools kept in dedicated cabinet, in accordance with housekeeping best practices.





## DRIFT CABINET

To have a set of drifts in various sizes is convenient when verifying the ID of your tubulars. However, it can be demanding to keep track of all your drifts. The DRIFT CABINET from RIGTOOLS provides a nice and organized solution to keep that overview at all times.

### Facts

Stainless steel cabinet with key lock containing 20 stainless steel drifts for DP, HWDP, DC and other tubulars. Other setups and combinations such as teflon drifts or wireline fishnecks can be supplied on request.

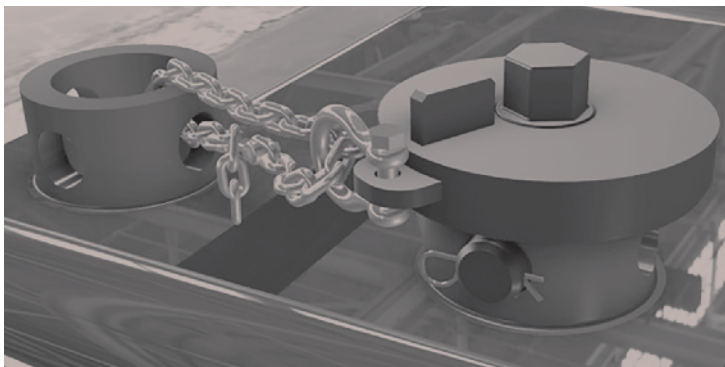
### Advantages

Inventory list with drift specifications follows the DRIFT CABINET. Each drift has a designated and marked place on the cabinet's rack system. Always

correct size of drift available. No flow restriction due to large ID on drifts.

### Benefits

Less risk of dropping wrong drift because size is stamped into each drift. The driller holds the DRIFT CABINET key and has full control of where the drifts are located. Storing each drift in the rack system will give full overview of how many and which drifts sizes are available - and which sizes that may be out and operational. Long lifetime because drifts do not disappear. No time wasted searching for drifts.



## PITBULL TORQUE TOOL

Many rigs are still equipped with manual mud pump fluid end caps. These caps are usually tightened and loosened by use of sledgehammer.

### Facts

Made of stainless steel. Tailor-made to fit any fluid end caps. RIGTOOLS can also provide a hydraulic or pneumatic torque wrench fit for purpose.

### Advantages

The PITBULL Torque Tool eliminates use of sledgehammer. Correct and controlled torque is applied when making up end caps.

### Benefits

Use of sledgehammer is a potential hazard to personnel and causes accidents while handling mud pump fluid end caps. This hazard is eliminated by using PITBULL Torque Tool. In addition it is more gentle to the equipment.

# FLOWLINE MAGNETS

Flowline Magnets are positioned in a tailor-made frame, which fits the header box or flowline (or both). This provides a complete magnetic barrier across the full width and depth of the fluid path.

## Facts

- Made of stainless steel with a retractable magnetic piston.
- Each magnet weighs only 4 kg.
- The kit will be designed to fit into your flowline.

## Advantages

Easy to install and retrieve in the flowline or ditch. When collection of swarf is needed each lightweight magnet is pulled one at a time. When retracting the magnetic piston the demagnetization and stopper plate will make the swarf fall off without touching it.

## Benefits

- Eliminates or reduces metal in mud pumps.
- Scrap the conventional heavy block magnet full of muddy metal swarf having to be lifted and mechanical cleaned.
- Reduces risk of finger cuts and back injuries.
- Crew will not be exposed to mud.
- No time wasted on cleaning magnets.





# MONSOON SHAKER SCREEN WASHER

The high level of safety in today's drilling operations requires special attention to clean work areas and mud exposures. To increase safety and prevent personnel being exposed to mud and chemicals, we have introduced the automatic MONSOON Shaker Screen Washer.

## Facts

- Made of stainless steel and quality components.
- Fast efficient cleaning of multi-size screens. MONSOON is fully certified for offshore conditions; ATEX Zone 1, NORSOK and CE certification.
- It requires supply of HP water, air and power.

## Advantages

- Special nozzle system creates dynamic impact.
- Small footprint.
- The machine has isolating inner and outer housing.
- 100% control with critical substances.
- Mud and cuttings will be drained.
- Vapors will leave through exhaust pipe.

## Benefits

- Consistent and gentle wash sequence will prolong screen lifetime significantly and reduce your cost.
- Crew will not be exposed to mud and noise level is reduced.
- The risk of exposure to hot water and hot surfaces using hot water is eliminated.
- Work area is always clean and tidy.
- Easily installed in shaker room.

# SHALE SHAKER SCREENS

The high level of efficiency in today's drilling operations does not allow for NPT. Rigs require quality consumables delivered to the agreed specification and time. Our flexible setup allows us to offer short lead times and shale shaker screens that conform to all international standards.

## Facts

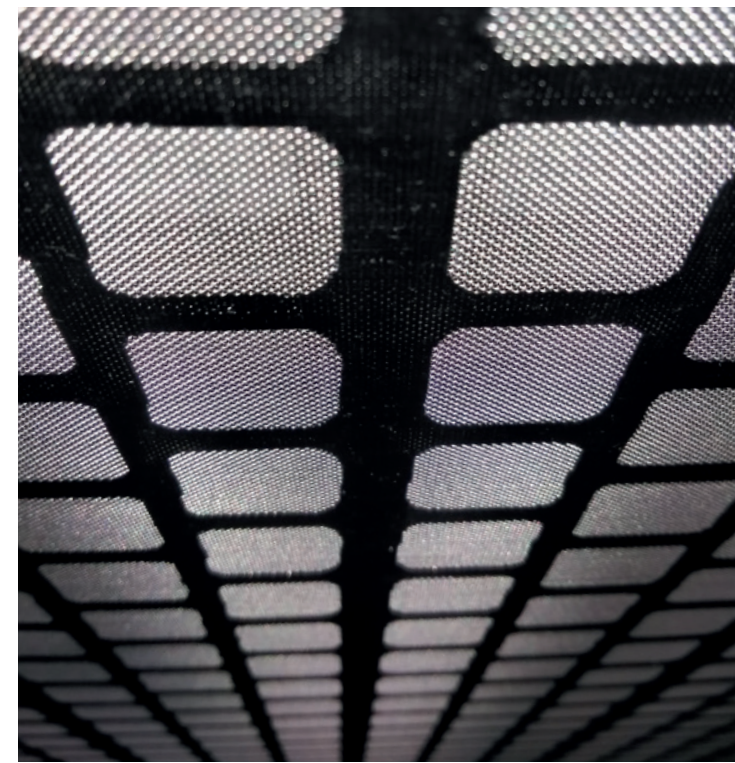
RIGTOOLS supply affordable quality non-OEM shale shaker replacement screens for the majority of shale shakers such as: VSM 300, VSM Multi-Sizer, AXIOM and many more. All our shale shaker screens conform to API RP13C (ISO 13501) and are produced in the USA.

## Advantages

With replacement shale shaker screens supplied by RIGTOOLS you will get high quality screens with short lead times at affordable prices.

## Benefits

We are confident that you will find your screen consumption will decrease because of the wear resistance of our screens. We have been credited with lowering mud bills due to less dilution, less fluid's loss and better solids separation which is also beneficial to pumps, pump parts, etc.





## SAFELIFT

The SAFELIFT is mounted directly on plug valves for a safer lifting and handling of plug valves.

### Facts

- Lightweight aluminium design weighing only 2 kg.
- Tailor-made to fit Anson, FMC and SPM-valves.

### Advantages

- Easy opening and closing of valves.
- No handling bars required.
- SAFELIFT ensures firm and secure grip when lifting plug valves and can stay on while the valve is in use.

### Benefits

Improves ergonomics when two people sharing the load while handling valves. When two people use the SAFELIFT on staircases they can carry the load with one hand and keep the other hand on the handrail. SAFELIFT makes it easier to see whether the valve is in open or closed position.

## CONTAINER ACCESS RAMP

The ideal solution to provide fast and safe access to containers when and where you need it.

### Facts

Made of aluminum with anti-slip surface.

#### Model Width

B800 800 mm  
B1000 1000 mm  
B1200 1200 mm

Available in standard measurements or tailor-made to your specific requirements.

### Advantages

The ramp is light weight and has transport wheels and built-in handles.

### Benefits

One person can easily transport, handle and position the Container Access Ramp due to the light weight, the built-in handles and transport wheels. Ensures a safe and even floor, e.g. when moving goods with trolleys, etc.

# PONCHO HOLE COVER

PONCHO Hole Cover made of tarpaulin to avoid dropped objects into the well doing completion jobs.

## Facts

- Made of durable high visibility tarpaulin.
- OD is 75" with flexible Velcro collar.
- Customized tarpaulin or alloy covers can be made on request.
- RIGTOOLS supply following standard sizes 3"- 8" ID , 8 1/2"- 14" ID and 14"- 20" ID.

## Advantages

The PONCHO is lightweight yet durable quality and using only Velcro. No metal items are used.

## Benefits

PONCHO's are easy and fast to attach and detach. They fit tightly around a wide range of tubulars and thereby prevent smaller items dropping into the well.



# BOXING RING ROTARY HANDRAIL

After removing Rotary bushings you install the BOXING RING Rotary Handrail in rotary table to reduce potential hazards when working on, through and below rotary.

## Facts

- The handrail consists of two half-moon parts kept together when installed in the rotary table.
- Tailor-made diameter to fit any rotary.
- Lightweight.
- One person can lift and move the lightweight handrail.
- High kick plates.

## Advantages

- Special locking system with no loose bolts required to keep the handrail locked together.

## Benefits

The easy and simple design makes it safe and fast to install without using bolts or tools. It reduces risk of dropped objects through rotary table due to the high kick plates. No risk of hanging up with wires when running through rotary table. The BOXING RING is very compact when dismantled and stored away.







## STANDARD HOLE COVER

Standard Hole Cover made of aluminium to prevent objects from falling down the well.

### Facts

- Made of aluminium.
- OD is 30" with pins to fit in holes in rotary table.
- Customized metal covers can be made on request.

### Advantages

- The Standard Hole Cover is lightweight yet durable quality.
- No loose metal items are used.

### Benefits

Hole Covers are easy and fast to install and remove from rotary table. They fit tightly into rotary table and thereby prevent smaller items dropping into the well.



## SPEED COVER

SPEED Cover for fast installation around tubulars to avoid dropped objects into the well.

### Facts

- Metal frame with flexible rubber opening and durable high visibility tarpaulin.
- OD is 41" and ID varies depending on DP size.
- Customized covers can be made on request.

### Advantages

- The SPEED Cover is lightweight alloy yet durable. No loose metal items are used.
- Fastest possible way to seal the opening effectively.
- Improve running times when running upper completion.

- Speed cover is quick to install and remove thereby reducing the overall clamp installation flat time.

### Benefits

SPEED Covers are easy and fast to install and remove. With the use of dedicated size the cover fits tightly around tubulars and thereby prevent smaller items from dropping into the well.

# BOP DRIFT TOOL

The Drilling operations worldwide experience problems after subsea BOP testing if the annular packer elements fail to fully retract. This potentially fatal situation often occurs in deep and cold waters. To increase efficiency and prevent pulling the BOP we offer the BOP Drift as a solution to this problem. The BOP Drift was developed in close cooperation between RIGTOOLS' design team and a worldwide leading drilling contractor.

## Facts

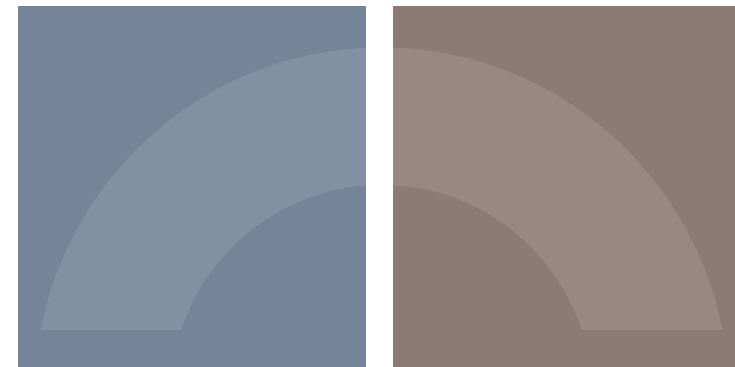
The BOP Drift will be designed and tailor-made to fit the rigs setup. It will be an integrated part of the BOP test string to allow for quick and safe drifting of BOP's. After testing rams and annular preventers, the test string is pulled out of the BOP. Drilling fluids can circulate freely through 8 channels with no flow restrictions in the annulus. API 7K certified.

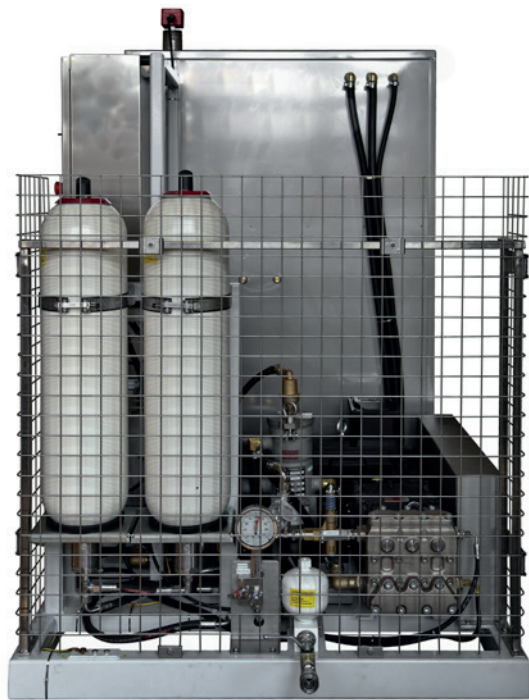
## Advantages

The tapered shape on the BOP Drift assists the annular packer element to retract to original setting if the annular packers are reluctant to retract fully prior to "drifting". Pulling the BOP stack is no longer the only solution.

## Benefits

With the possibility of using the BOP Drift you prevent damaging the annular BOP and prevent retrieval of the marine riser and BOP. Generally the option of using the BOP Drift will eliminate annular failures and potential downtime, thus saving time and money.





# HIGH PRESSURE CLEANERS

RIGTOOLS provide a range of High Pressure Cleaners. The machines are designed by RIGTOOLS using the best and most reliable components available on today's market.

## Facts

The units are tailor-made to match the end users specific requirements. Capacity is typically from 100 Bar to 500 Bar. Non Ex as well as Ex rated. Non heated, heated or winterized. Mobile units or stationary, perhaps installed in an offshore cage. The units can also be designed to supply the distribution network or ring lines on rigs or ships. The High Pressure Cleaners comply with all current regulations and requirements in the oilfield and for ships.

## Advantages

RIGTOOLS have developed High Pressure Cleaners specially designed to deliver required water flow and pressure to RIGTOOLS BHA Wash Tool, TYPHOON Wiper, COBRA DP Pipe Wash & Dope Tool and the MONSOON Shaker Screen Washer.

## Benefits

- Highly reliable quality units will prevent downtime.
- Service and maintenance is reduced to a minimum.
- Using tailor-made HP Cleaners units always ensures the ideal capacity and results.



# RIGTOOLS

## **HEAD QUARTER**

RIGTOOLS ApS  
Haraldsvej 45  
DK-8960 Randers SØ  
Denmark

Phone +45 3022 7747

[info@rigtools.net](mailto:info@rigtools.net)  
[www.rigtools.net](http://www.rigtools.net)

## **SALES OFFICE - COPENHAGEN**

RIGTOOLS ApS  
Fruebjergvej 3  
DK-2100 Copenhagen Ø  
Denmark

Phone +45 2929 6823

[sales@rigtools.net](mailto:sales@rigtools.net)  
[www.rigtools.net](http://www.rigtools.net)

## **SALES OFFICE - HOUSTON**

Total RIGTOOLS Corporation  
800 Town and Country Blvd  
Suite 500  
HOUSTON, Texas 77024

Phone: +1 346-822-9992

[usasales@rigtools.net](mailto:usasales@rigtools.net)  
[www.rigtools.net](http://www.rigtools.net)