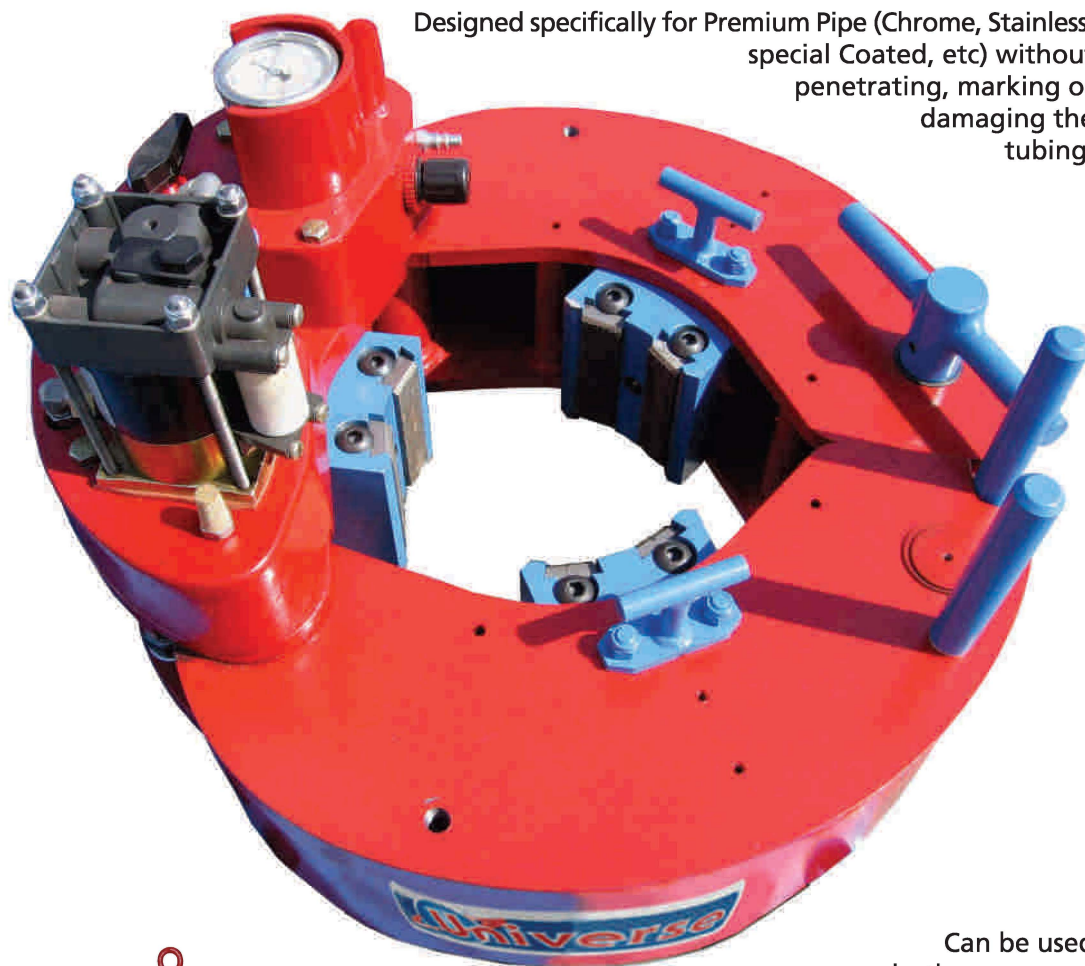
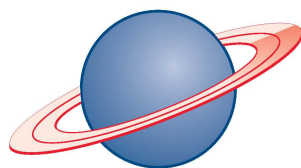
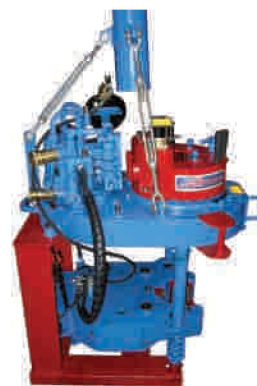
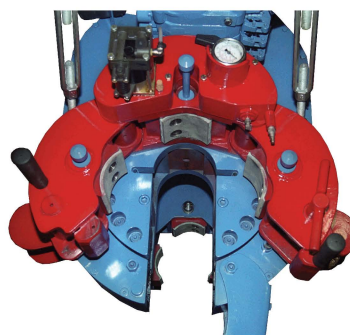
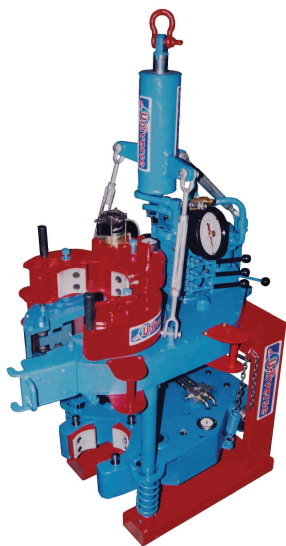


Friction Bite Unit

S T R A I G H T T O R Q U E F R O M U N I V E R S E



Can be used on both an open or closed mouth Power Tong



Universe Machine
C O R P O R A T I O N

Ph
Toll Free

780-468-5211
1-866-468-5211

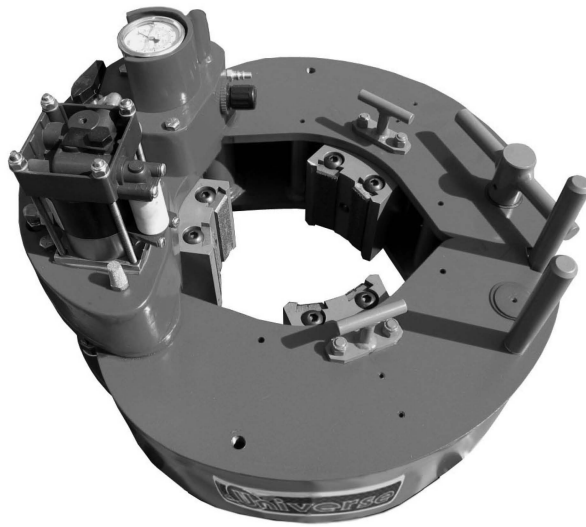
Address

5545 - 91 Street, Edmonton, Alberta
Canada, T6E 6K4

E-mail
Web Site

sales@umcorp.com
www.umcorp.com

Friction Bite Unit



Modular Can easily be mounted to a Universe (or other manufacturer's) power tongs.

Powered by compressed air There is no need for any additional hydraulics, *making it very light and compact.*

Wrap around dies On the 04A05C unit *and insert dies for the 04A09D unit.*

Dies come in a variety of configurations that include :

Conventional Hardened Steel Fine Toothed

Able to hold maximum torque.

Less marking on tubing when used with the FBU than conventional cam-type tongs.

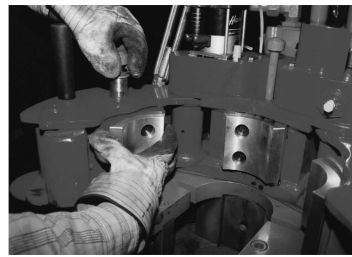
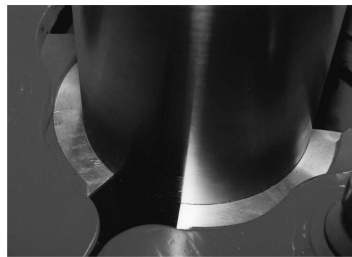
Grit faced (Tungsten Carbide)

Able to hold maximum torque with minimum surface scratches making it acceptable for most CRA applications.

Smooth Aluminum

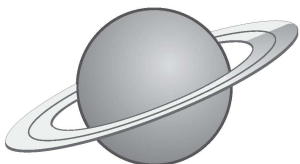
Provides an intermediate holding torque with no markings.

For additional holding torque, can be used with silicone carbide mesh.



Model	Size Range Inches (mm)	Maximum Torque (1) ft-lbs (kg-m)	Weight lbs (kg)	Power Required (psi compressed air)	Dimensions width x length x height (inches) (mm)
04A05C	2-1/6 - 5-1/2 (52.4 - 139.7)	15,000 (2,074)	185 (84)	80 - 120	16-5/8 x 17-1/2 x 13-1/2 (0.42 x 0.45 x 0.34)
04A09D	2-1/6 - 5-1/2 (60.3 - 244.5)	22,000 (3,040)	215 (98)	80 - 120	21-1/2 x 22-1/2 x 13-1/2 (0.55 x 0.57 x 0.34)

Maximum torque may vary on exact air pressure, diameter of pipe and type of dies used.
Data is subject to change without notice; visit our website for up to date information.



**Universe
MACHINE**
C O R P O R A T I O N

Ph 780-468-5211
Toll Free 1-866-468-5211
Address 5545 - 91 Street, Edmonton, Alberta
Canada, T6E 6K4
E-mail sales@umcorp.com
Web Site www.umcorp.com